

ܐܘܪܝܝܢܐ ܕܚܘܪܐܝܢܐ

ASSYRIAN ALPHABET BY



ܕܠܐܬܐ
Dalath



ܓܡܠܐ
Gamal



ܒܝܬܐ
Beth



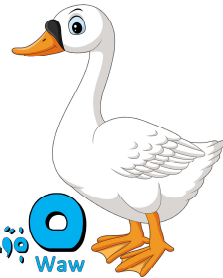
ܐܠܦܐ
Alep



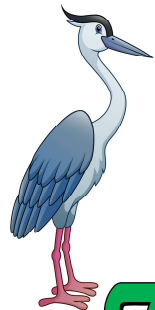
ܬܝܬܐ
Teith



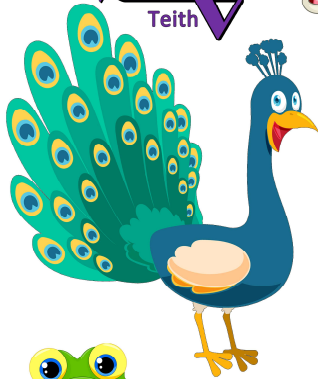
ܙܝܢܐ
Zayn



ܘܘܐ
Waw



ܗܝܐ
Heh



ܚܝܬܐ
Kheith



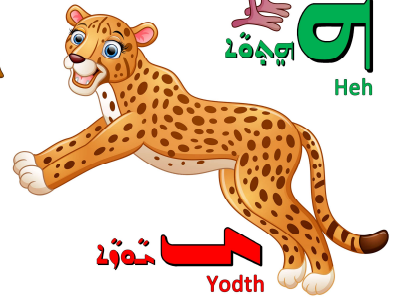
ܡܝܡܐ
Meem



ܠܡܐܬܐ
Lamadth



ܟܘܦܐ
Kap



ܝܘܬܐ
Yodth



ܣܕܗܐ
Sadeh



ܦܗܐ
Peh



ܫܡܟܬܐ
Semkath



ܢܘܢܐ
Noon



ܚܝܬܐ
eh



ܬܘܘܐ
Taw



ܫܝܢܐ
Sheen



ܕܪܝܫܐ
Resh



ܩܘܦܐ
Qop